



Turtle Tales

Our **Turtle Conservation Centre** is turtle-y busy, caring for loggerhead hatchlings and sub-adult green, hawksbill, and loggerhead turtles. Keep reading for some flipper-tastic news!

We welcomed the first stranded turtle hatchling of 2024!

Turtle hatchling stranding season has officially begun!

On 5 March, our Turtle Conservation Centre received the first stranded loggerhead turtle hatchling of 2024! Little #1 was found wrapped in kelp on Muizenberg Beach by members of our **Turtle Rescue Network**.



#1 was swiftly transported to our **Turtle Conservation Centre**, where our veterinary team gave the little turtle the first response care it needed. This included a freshwater bath to rehydrate as well as some food and rest.

Little #1 is responding well to treatment - the ultimate goal of **rehabilitation** is release back into the ocean, so our turtle team is doing their utmost to help #1 get better!



What is stranding season?

Loggerhead and leatherback turtles nest along the KwaZulu-Natal coastline between October and December. Afterwards, thousands of newly hatched turtles venture into the warm, fast Agulhas Current, which flows along South Africa's eastern coastline. As the current slows and turns, hatchlings are often spat into the colder waters near the Benguela Current. These hatchlings become dehydrated, shocked, and cold.

This marks the beginning of "**stranding season**" from late February into July - stranding occurs when the little turtles become too exhausted to cope. Hatchlings require lots of care and often medical intervention to save their lives!

How can I help?

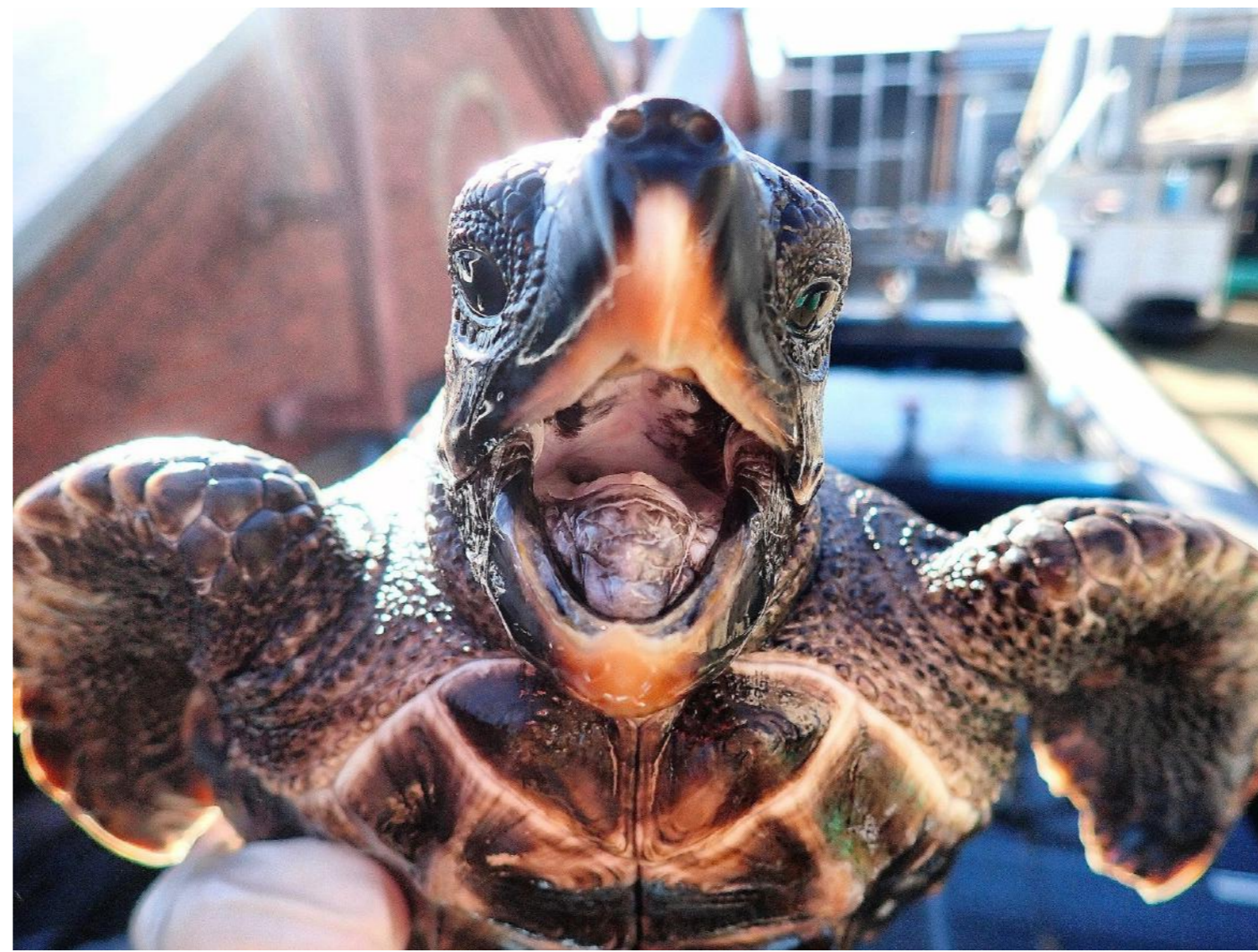
If you live in the Western Cape, remember to keep an eye on the beaches for stranded turtle hatchlings! If you find one, phone our Turtle Rescue Hotline on 083 300 1663 immediately.

[Learn about stranding season!](#)

Turtle Teacher

Deciding what to feed the **turtles in rehabilitation** makes up a significant portion of our turtle team's work!

Turtles' diets are highly dependent on their species and age. For example, green turtle hatchlings are omnivorous, but adult green turtles are solely herbivorous. Different species of turtle have a range of dietary requirements, too: For example, leatherback turtles primarily eat jellyfish, while loggerhead turtles enjoy a range of protein sources.



So, what do the loggerhead hatchlings eat at the Turtle Conservation Centre?

These little patients are in dire need of nutrients as they are typically exhausted and malnourished after their stranding ordeal. Our turtle team prepares a fishy "smoothie" packed with the proteins and vitamins these little patients need. Hake, white mussel, pilchards, vitamins, and vegetables like broccoli are all blended into a delicious green-brown liquid. This smoothie is then set into a solid pancake, cut into squares, and fed to the hatchlings - delicious!



Want to be a part of turtle rescue?

Our **Turtle Rescue Network** spans the Western Cape coastline, and is made up of incredible organisations, communities, conservancies, and locals.

Our Turtle Rescue Network Coordinator runs a **WhatsApp group** that facilitates turtle rescues, connects rescuers with the turtle team at the Turtle Conservation Centre, and provides news on turtle rescues throughout the year.

If you live in a local coastal community and would like to be part of the turtle rescue process in your area, or you'd like to join the Turtle Rescue WhatsApp group to stay updated, [click here](#).



Stay in the loop with our turtles!

Turtle Tales is a regular mailer from the **Turtle Conservation Centre**, packed with tons of turtle news, information, and fun! If you want to be a part of our turtle community, this is the space for you!

[Sign up here!](#)